

**RPS14 antibody - middle region**  
**Rabbit Polyclonal Antibody**  
**Catalog # AI11728****Specification**

---

**RPS14 antibody - middle region - Product Information**

Application	WB
Primary Accession	<a href="#">P62263</a>
Other Accession	<a href="#">NM_001025071</a> , <a href="#">NP_001020242</a>
Reactivity	Human, Mouse, Rat, Rabbit, Zebrafish, Pig, Horse, Yeast, Dog
Predicted Host	Mouse, Rat, Zebrafish, Chicken, Dog
Clonality	Rabbit
Calculated MW	Polyclonal 17kDa KDa

**RPS14 antibody - middle region - Additional Information****Gene ID** 6208

Alias Symbol	<b>S14, EMTB</b>
<b>Other Names</b>	
40S ribosomal protein S14, RPS14	

**Format**

Liquid. Purified antibody supplied in 1x PBS buffer with 0.09% (w/v) sodium azide and 2% sucrose.

**Reconstitution & Storage**

Add 100 ul of distilled water. Final anti-RPS14 antibody concentration is 1 mg/ml in PBS buffer with 2% sucrose. For longer periods of storage, store at 20°C. Avoid repeat freeze-thaw cycles.

**Precautions**

RPS14 antibody - middle region is for research use only and not for use in diagnostic or therapeutic procedures.

**RPS14 antibody - middle region - Protein Information****Name** RPS14 ([HGNC:10387](#))**Function**

Component of the small ribosomal subunit. The ribosome is a large ribonucleoprotein complex responsible for the synthesis of proteins in the cell. Part of the small subunit (SSU) processome, first precursor of the small eukaryotic ribosomal subunit. During the assembly of the SSU processome in the nucleolus, many ribosome biogenesis factors, an RNA chaperone and ribosomal proteins associate with the nascent pre-rRNA and work in concert to generate RNA folding, modifications, rearrangements and cleavage as well as targeted degradation of pre-ribosomal RNA by the RNA exosome (PubMed:<a href="http://www.uniprot.org/citations/34516797" target="\_blank">34516797</a>).

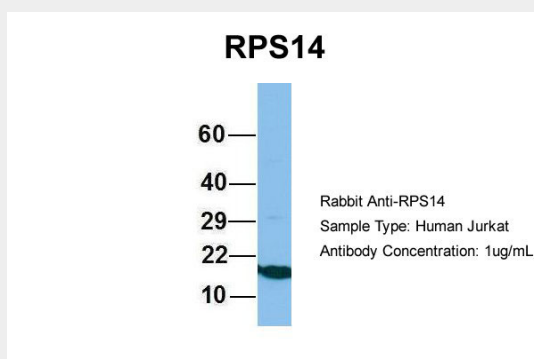
**Cellular Location**

Cytoplasm. Nucleus, nucleolus

**RPS14 antibody - middle region - Protocols**

Provided below are standard protocols that you may find useful for product applications.

- [Western Blot](#)
- [Blocking Peptides](#)
- [Dot Blot](#)
- [Immunohistochemistry](#)
- [Immunofluorescence](#)
- [Immunoprecipitation](#)
- [Flow Cytometry](#)
- [Cell Culture](#)

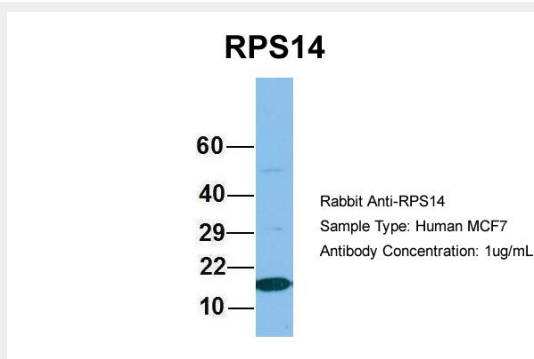
**RPS14 antibody - middle region - Images**

Host:Rabbit

Target Name:RPS14

Sample Tissue:Jurkat

Antibody Dilution: 1.0µg/mL RPS14 is supported by BioGPS gene expression data to be expressed in Jurkat

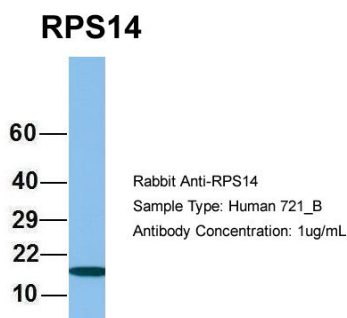


Host:Rabbit

Target Name:RPS14

Sample Tissue:MCF7

Antibody Dilution: 1.0µg/mL RPS14 is supported by BioGPS gene expression data to be expressed in MCF7

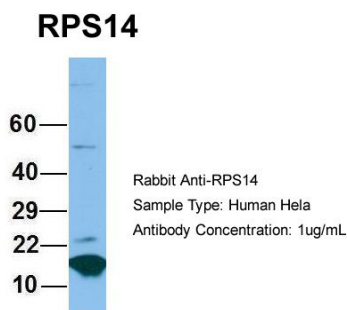


Host:Rabbit

Target Name:RPS14

Sample Tissue:721\_B

Antibody Dilution: 1.0µg/ml RPS14 is strongly supported by BioGPS gene expression data to be expressed in Human 721\_B cells

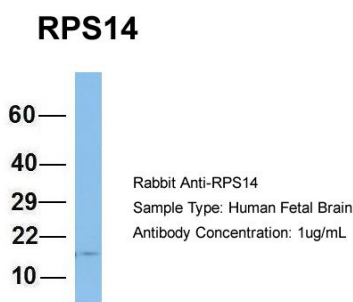


Host:Rabbit

Target Name:RPS14

Sample Tissue:HeLa

Antibody Dilution: 1.0µg/ml RPS14 is supported by BioGPS gene expression data to be expressed in HeLa

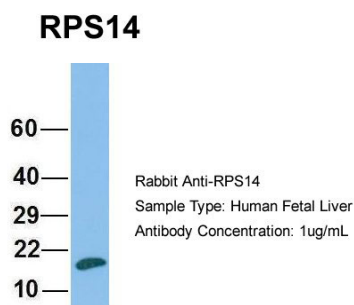


Host:Rabbit

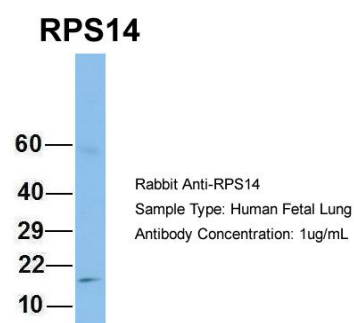
Target Name:RPS14

Sample Tissue:Human Fetal Brain

Antibody Dilution: 1.0µg/ml



Host:Rabbit  
Target Name:RPS14  
Sample Tissue:Human Fetal Liver  
Antibody Dilution: 1.0 $\mu$ g/ml



Host:Rabbit  
Target Name:RPS14  
Sample Tissue:Human Fetal Lung  
Antibody Dilution: 1.0 $\mu$ g/ml

#### **RPS14 antibody - middle region - References**

Kenmochi,N., (1998) Genome Res. 8 (5), 509-523  
Reconstitution and Storage:For short term use, store at 2-8C up to 1 week. For long term storage, store at -20C in small aliquots to prevent freeze-thaw cycles.